

BALDOR • RELIANCE

Customer information packet

XEFRPM25154

15HP, 1800, 460V, HL254T, TEFC, F1

Specifications

Enclosure	TEFC
Frame	HL254T
Frame Material	Exposed Laminations
Frequency	60.00 Hz
Output @ Frequency	15.000 HP @ 60 HZ
Phase	3
Synchronous Speed @ Frequency	1800 RPM @ 60 HZ
Voltage @ Frequency	460.0 V @ 60 HZ
Agency Approvals	CCSA US NEMA PREMIUM
Auxillary Box	No Auxillary Box
Base Indicator	Rigid
Bearing Grease Type	Polyrex EM (-20F +300F)
Constant Torque Speed Range	1-60
Current @ Voltage	15.000 A @ 460.0 V
Duty Rating	CONT
Feedback Device	NO FEEDBACK
Frame Prefix	HL
Heater Indicator	No Heater
High Voltage Full Load Amps	15.0 a
Insulation Class	H
KVA Code	G
Motor Standards	NEMA
Mounting Arrangement	F1
Overall Length	23.89 IN
Product Family	Fan - Centrifugal
Pulley End Bearing Type	Ball
Pulley Face Code	Standard
Service Factor	1.15
Shaft Diameter	1.625 IN
Shaft Ground Indicator	No Shaft Grounding
Shaft Rotation	Reversible

Part detail

Revision	H
Type	AC
Mech. spec.	
Base	
Status	PRD/A
Elec. spec.	LS7016A
Layout	619702-001
Eff. date	04-23-2019
CD Diagram	422927-001
Poles	04
Leads	
Proprietary	False
Created date	06-03-2016

Speed	1800 rpm
Thermal Device - Bearing	None
Thermal Device - Winding	Normally Closed Thermostat

Nameplate

000613007QF

	DUTY	HP	RPM	AMPS	VOLTS	HZ					
	CONT	15	1800	15.0	460	60					
CAT.NO.	XEFRPM25154		SPEC. NO.		H25-A000-0001						
SER.NO.			FRAME SIZE		HL254T	TYPE PSM					
AMB.	40	S.F.	1.15	ENCL.	TEFC	PH	3	DESIGN	B	CODE	G
NEMA NOM. EFF	94.9		GUARANTEED EFFICIENCY		94	POWER FACTOR		95.8	INSUL. CLASS		H
D.E. BRG.	45BC02J30X		O.D.E. BRG.		35BC02J30X						
VPWM INVERTER DUTY @1.0SF	CHP HZ	60-90		CT HZ	1-60		VT HZ	0-60			
	X/T										

000692000VY

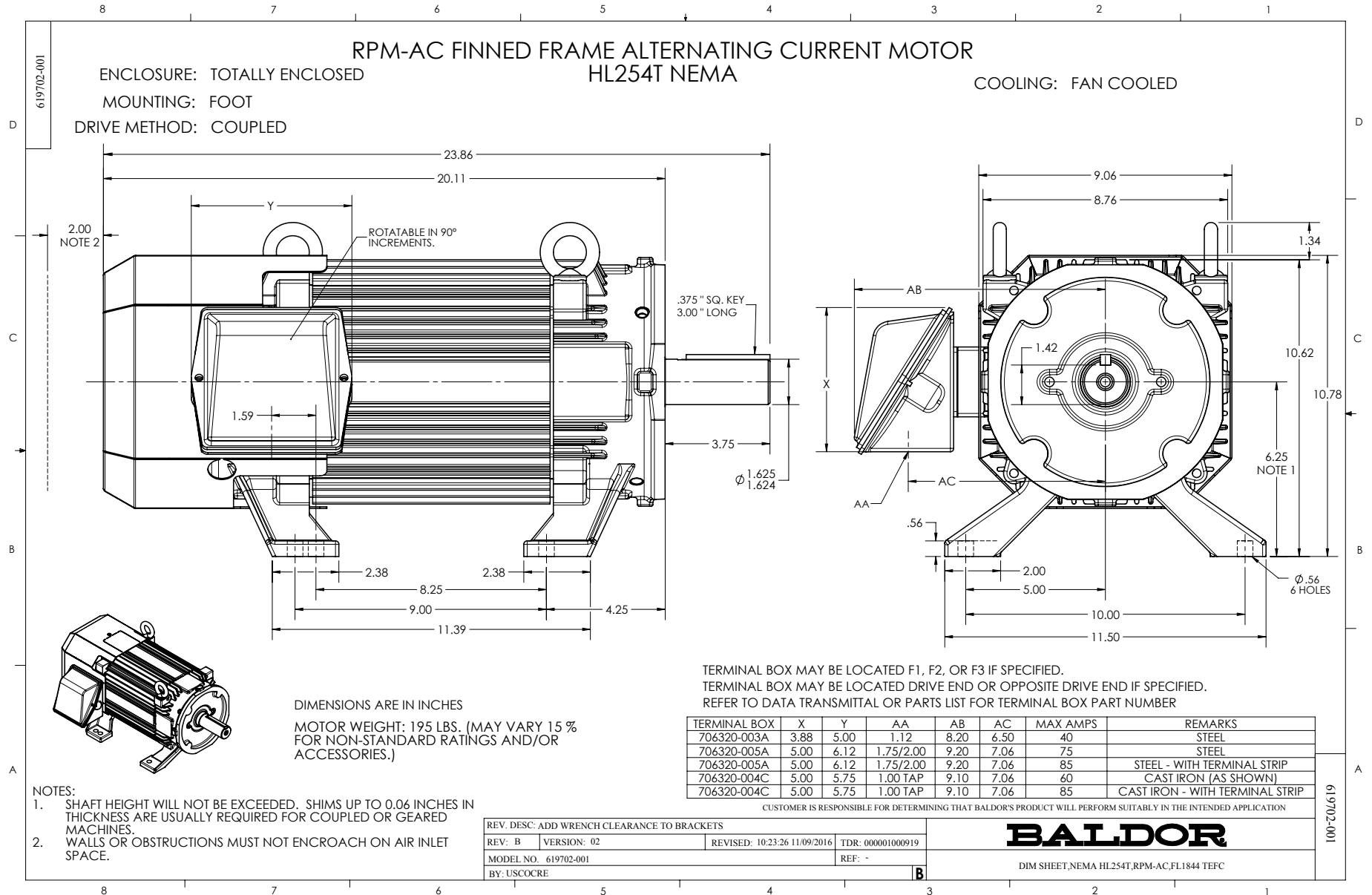
MEAS OPEN CIRCUIT VOLTAGE

IS VOLTS AT RPM.

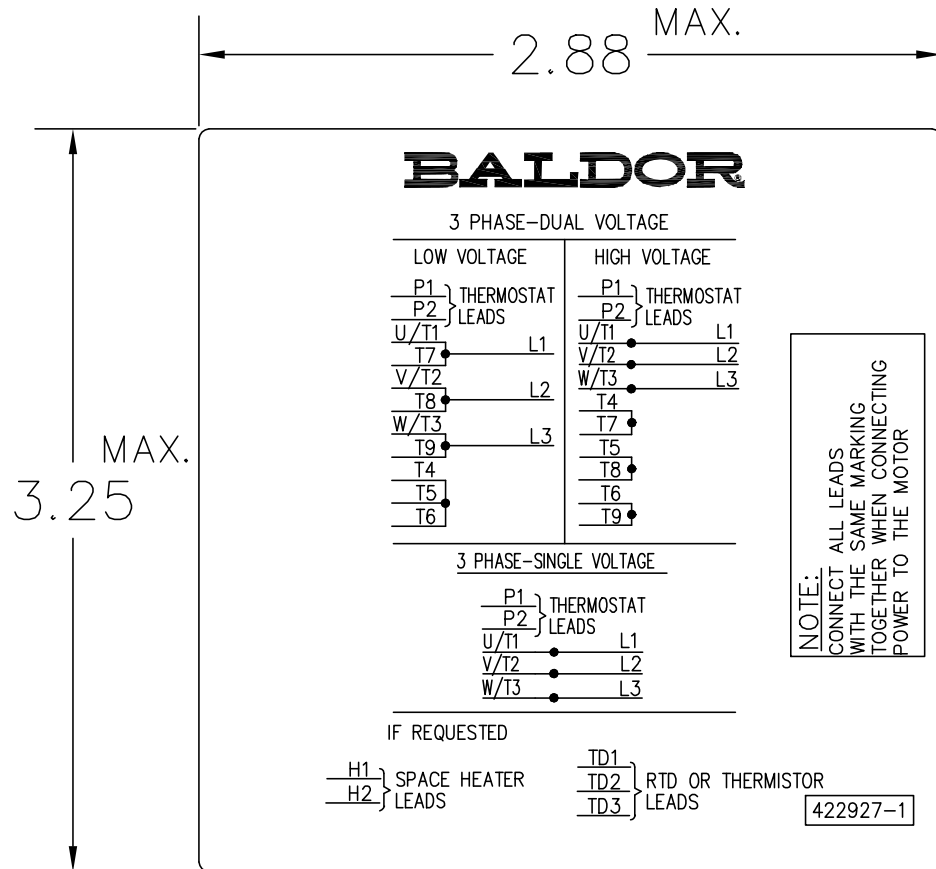
Parts list

Part number	Description	Quantity
WS313088	WS H25-A000-0001	1.000 ea
RA309317	RA H25-A000-0001	1.000 ea
411716004A	219P039 - 219P039 - LA	1.000 ea
033775004EA	DRSCR #6-1/4 304 S.S.	4.000 ea
000613007QF	NP,RPM AC - XE WITH CERTIFIED LOGO	1.000 ea
000613006ABP	RPM-XE,EXTREME EFFICIENCY,UL LISTED	1.000 ea
000692000VY	PERMANENT MAGNET MOTOR NAMEPLATE	1.000 ea
422927001	C/D LABEL	1.000 ea
004824007AB	PAINT,XT	0.100 ea
418057243A	GROOVE PIN	1.000 ea
807504052C	FL180 FRAME	1.000 ea
810101004AAC	BRKT,ODE,LSPM180 (FL250)	1.000 ea
810101003AAA	BRKT,DE,LSPM180 (FL250)	1.000 ea
HA4054	SHORT T-DRAIN FITTING, .125" N.P.T.	1.000 ea
HA4054	SHORT T-DRAIN FITTING, .125" N.P.T.	1.000 ea
004824015A	GREASE POLYREX EM	0.100 lb
036000050JB	M8-1,25 X 50 MHHCS	2.000 ea
032018014AK	HHCS 1/4-20X1-3/4 PLTD.	3.000 ea
415045002J	SLGR	1.000 ea
415045002H	SLGR	1.000 ea
400638001D	WAVEN (Customer number 43699)	1.000 ea
034017012AB	LCKW 1/4 STD. PLATED 034017012AF	4.000 ea
418150003A	GREASE FITTING CAP	2.000 ea
035000001A	ALFTG 1/8" 1610-BL	1.000 ea
035000001A	ALFTG 1/8" 1610-BL	1.000 ea
036140001B	METRIC EYEBOLT	2.000 ea
033102012AG	HXNUT LEAD CONN 1/4-20 GR5 ZP	4.000 ea
033070200HH	STUD 1/4 X 12.5	4.000 ea
033102012AG	HXNUT LEAD CONN 1/4-20 GR5 ZP	4.000 ea
415000103G	TLUG	1.000 ea
415072001A	CLAMP	1.000 ea

417733001A	GSK C/ BOX BASE	2.000 ea
034180010DA	KEY 1/4X1/4X1-1/4L	1.000 ea
078546001G	FAN 180	1.000 ea
807505505A	COVER,FAN,HL210	1.000 ea
036000012HB	HHCS M6X12MM LONG PLATED	4.000 ea
036000045JB	M8-1.25 X 45MM HXHCS	4.000 ea
418010006A	CAST,MPLATE,180-280,EX1,7BY	1.000 ea
418018074A	GROUND LABEL G100 METRIC 160 D.C.	1.000 ea
406673002AE	2" CAP PLUG	1.000 ea
036620009AB	M8 EXTERNAL LK WASHER	1.000 ea
036601008AB	M6 FLAT WASHER	4.000 ea
706320004C	CBOX REPL 705028-2C MTRC	1.000 ea
075459000A	C/BOX CVR W75459	1.000 ea
065564000D	GASK 210-250	1.000 ea
036000012HB	HHCS M6X12MM LONG PLATED	2.000 ea
034180024FA	KEY 3/8X3/8X3 L	1.000 ea
004824007K	SPECIAL PAINT	0.100 ea



422927-001



NOTE:
DATA TO BE SIZED
SO THAT IT FITS INTO
MATERIAL DECAL
DIMENSIONS. MAKE
LETTERS & NUMBERS
AS LARGE AS POSSIBLE.

MATERIAL: CERAMATIC DGF-P4
PERMA GRIP ADHESIVE

ALL LETTERS, NUMBERS
AND LINES TO BE BLACK
ON WHITE BACKGROUND.

422927-001

REV. DESC: CHANGE BACKGROUND COLOR FROM GOLD TO WHITE		
REV. LTR: B	VERSION: 02	TDR: 00000788708
FILE: \RGG\00000\203	REVISED: 08:09:29 03/04/2013	
MTL: -	BY: RGGWT	

BALDOR

EXTERNAL CONNECTION LABEL

SH 1 of 1